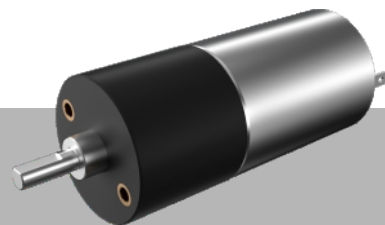


**28**  
mm

**Plastic P**  
塑料



# MC028

外壳材质 Material	输出轴承类型 Bearing	径向负荷 Radial load	轴向负荷 Axial load	输出轴最大承受压入力 Output shaft max press-in force	输出轴径向间隙 Output shaft radial clearance	输出轴轴向间隙 Output shaft axial clearance	空载背隙 No-load backlash
塑料 Plastic	含油轴承 Porous bearing	≤0.5Kgf	≤0.4Kgf	≤4Kgf	≤0.06mm	≤0.3mm	≤2°

齿轮级数 Gearbox Stages		3		4			5			6				7			
减速比 Reduction ratio		13	16	29	35	42	62	81	110	156	199	227	290	363	438	599	764
额定负载力矩 (Kg.cm max) Max rated torque (kg.cm)		1	1	2	2	2	3	3	3	4	4	4	4	4	4	4	4
瞬间负载力矩 (Kg.cm max) Max Instant torque (kg.cm)		3	3	6	6	6	9	9	9	12	12	12	12	12	12	12	12
效率 (%) Gearbox efficiency (%)		73	73	65	65	65	59	59	59	53	53	53	53	47	47	47	47
齿轮箱长度L1 (mm) Gearbox length L1 (mm)		14.9		17.2			19.5			21.8				24.1			
总长L0 (mm) Overall Length L0 (mm)		52.7		55			57.3			59.6				61.9			

使用相对湿度:20%~85%RH,使用温度范围:-15°C ~ 85°C。 Relative humidity: 20%~85%RH, Temperature range: -15°C ~ 85°C.

